

# Wyandotte County Isolation and Quarantine Guidance for SCHOOLS AND CHILDCARE

## When a Student/Child or Employee Should Stay Home from School or Childcare



- **Students, children, and employees exhibiting symptoms of COVID-19** without other obvious explanations are prohibited from coming to school or childcare, and if they do come in, they will be sent home immediately. School districts and childcare providers should be familiar with the symptoms of COVID-19 based on KDHE guidance. The current known symptoms are:
  - Fever (100.0° F or higher)
  - Chills
  - Rigors
  - Muscle or body aches
  - Fatigue
  - Headache
  - Sore throat
  - Respiratory illness such as cough, shortness of breath or difficulty breathing
  - New loss of taste or smell
  - Diarrhea, abdominal pain, or vomiting



- **A student, child, or employee has tested positive for COVID**
  - If a student/child has tested positive for COVID, the parent must notify the school of the positive result. If an employee has tested positive, the employee must notify the school/childcare facility
  - COVID positive students/children and employees must be excluded from school/childcare for 10 calendar days since symptoms first appeared and remain fever-free for 72 hours without the use of fever reducing medication, whichever is longer
  - **When the school or childcare facility receives the result, they should immediately report it to the UGPHD.**



- **A student, child, or employee who has been tested for COVID and is awaiting test results must be excluded and stay home until results are available**



- **Other students, children, and employees in the household of a positive case or who has been exposed to a known case of COVID-19**
  - If a student, child, or employee is excluded from school/childcare because of a positive COVID-19 test, other students, children, and employees living in the same household are considered close contacts and will be excluded from school/childcare for a mandatory 14-day quarantine period, which begins after their last exposure to the "case" (person who tested positive). **They should also get tested for COVID-19 5-7 days after exposure.**
    - If the household contacts continue to live in the same household as the case while the case is in isolation, the 14-day quarantine period for household contacts begins once the case is released from isolation by Public Health
  - If a student, child, or employee has otherwise been identified by Public Health to be a close contact to a confirmed case, they must be excluded from school/childcare for a mandatory 14-day quarantine period. **They should also get tested for COVID-19 5-7 days after exposure.**



- **Travel-related quarantine**
  - If a student, child, or employee has recently traveled from a location on the KDHE Travel-related Quarantine List, they are subject to a mandatory 14-day quarantine starting from the day after they return to Kansas.
  - The most up-to-date list of locations can be found at this link: <https://www.coronavirus.kdheks.gov/175/Travel-Exposure-Related-Isolation-Quaran>



[wycokck.org/COVID-19](https://www.wycokck.org/COVID-19)

# 2

# Wyandotte County Isolation and Quarantine Guidance for SCHOOLS AND CHILDCARE

## School and Childcare Response to a Case of COVID-19

- **Notify the Unified Government Public Health Department**
  - Notify the Epidemiology Department at the Unified Government Public Health Department (UGPHD) of any positive students, children, or employees. You can email the department at [epidemiology@wycokck.org](mailto:epidemiology@wycokck.org) or call the epidemiology hotline at 913-573-8877. You must notify the Health Department as soon as possible after the notification of the positive result



[epidemiology@wycokck.org](mailto:epidemiology@wycokck.org)



913-573-8877



- **Clean and disinfect**
  - As soon as the school or childcare facility becomes aware of a student, child, or employee that has been diagnosed with COVID-19 disease, the custodial staff will be informed so that all desks, lockers and workspaces of the person are thoroughly disinfected. If the facility is not open when notification occurs, the custodial staff will wait 24 hours or as long as possible prior to disinfecting and instead will block off the area so that others do not have contact. However, if that is not possible or school/childcare is in session, the cleaning will occur immediately



- **Develop a list of close contacts, in collaboration with the Health Department**  
*See definition of "close contact" on page 3*
  - After reporting the positive case to the UGPHD, School/childcare staff will immediately begin compiling a list of close contacts, including names, email addresses and phone numbers. Consider the two days prior to when the case started having symptoms or if the case was asymptomatic, the two days prior to the date the sample was collected. Identify anyone who would have been within 6 feet for 10 minutes or more or would have had direct contact with secretions.



- **Work with Health Department staff:** School/childcare staff will work with UGPHD epidemiologists to identify these close contacts. A list of close contacts will be provided to the UGPHD along with contact information
- Guardians of students/children who have been identified as close contacts and any staff identified as close contacts should be informed immediately
- Identified close contacts must immediately start a **mandatory 14-day quarantine** beginning the day after the last contact with the case. **They should also get tested 5-7 days after exposure.**



- **Notify parents/students/children and employees**
  - The school or childcare facility will contact parents/students/children and employees and notify them that a person who tested positive for COVID-19 was in the building and encourage cooperation with the school/childcare facility and the local health department to trace contacts with the individual. The individual who tested positive will not be identified in communications to the school/childcare community at large



3-1-1



[wycokck.org/COVID-19](http://wycokck.org/COVID-19)

# 3

## Wyandotte County Isolation and Quarantine Guidance for SCHOOLS AND CHILDCARE

### Return to School or Childcare After Exclusion

#### ISOLATION



**Untested, with symptoms:** Persons who have not received a test proving or disproving the presence of SARS CoV-2, the virus that causes COVID-19, but experience symptoms, may return if the following conditions are met:

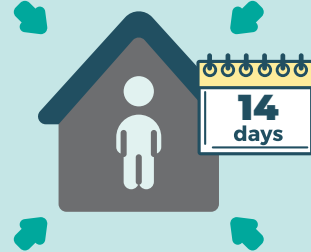
- Ten (10) calendar days have passed since symptoms first appeared
- Fever free for 72 hours without the use of fever reducing medication, whichever is longer



**Positive result:** Positive cases may return if the following conditions are met:

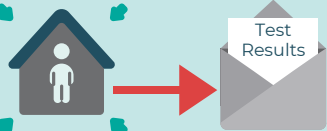
- Ten (10) calendar days have passed since symptoms first appeared
- Fever free for 72 hours without the use of fever reducing medication, whichever is longer
- If asymptomatic (no symptoms), cases may return if ten (10) calendar days have passed since the date the sample was collected and no symptoms have developed

#### QUARANTINE



**Negative result:**

- People who are identified as close contacts of a COVID-19 case or have travelled from a location on the KDHE Travel-related Quarantine List must be quarantined for 14 days. A negative test result within the 14-day quarantine period does not affect the quarantine period and the person must finish their 14-day quarantine.
- People who have not been identified as a close contact to a COVID-19 case and have not travelled from a location on the KDHE Travel-related Quarantine List may return to work/school/childcare



**Tested and awaiting results:** Persons who are suspected of having COVID-19 disease and are awaiting test results should be isolated at home until test results are received.

- Once results come back, follow the corresponding instructions above for a positive or negative result

### Important Definitions

#### A case of COVID-19

A person is considered a case of COVID-19 disease if they have tested positive for the SARS-CoV-2 virus by a diagnostic test (PCR or antigen).

#### Infectious period

Based on what we currently know, a case is considered infectious two days prior to the onset of symptoms through 10 days after the onset of symptoms. For cases that do not have symptoms, the infectious period is considered as two days prior to the date the sample was collected through a minimum of 10 days from the date the sample was collected

#### Close contact

A person is considered a close contact of a case if they were within 6 feet of the case for 10 minutes or more or if they had exposure to secretions (for example, being coughed or sneezed on)